

Symmetry® Plus Treatment Recliner

Maximum Comfort,
Clinical Support



During the path of Progressive Mobility, the Symmetry Plus Treatment Recliner promotes patient recovery. With an infinite number of recline positions and extended arm caps for safer ingress and egress, the recliner is a safe and comfortable platform for patient use.



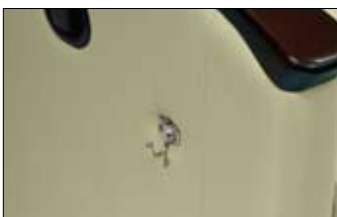
4-sided Brake Access



Step-lock Brake



Trendelenburg Position



Foley Bag Hook

Backrest locks into infinite number of recline positions

Comfortable full flat-bed position

BackSmart® Trendelenburg positioning

Pull-out foot tray gives patients added comfort while in transit

Stowable 360-degree swivel sidetray option

Extended, wide arm caps facilitate easy entry and exit

Standard and narrow width available

Symmetry Plus Treatment Recliner

Standard Features

- Independent ottoman allows feet to be raised without moving the back
- Mid-ottoman cushion provides extra support when feet are elevated
- Chair construction includes metal seat frame and sinuous wire springs
- Highly resilient polyurethane foam cushions
- Removable back cushion enables thorough cleaning and service
- Pull-out foot tray gives patients added comfort while in transit
- Rigid push bar for easy maneuverability
- Fixed sides provide stability for electromechanical mounts
- Egress assist polyurethane arm caps
- Meets flammability standards of BIFMA F1-1978 — revised 1980 and CAL 117
- Meets ANSI//BIFMA X5.4 2005 per tests conducted in a certified test facility
- Oversized tracking, lockable casters provide agile maneuverability (front rigid, rear swivel)

Optional Features

- Fold-down side tray provides prep area for caregivers and serves patients' ancillary needs (permanently mounted to right side, left side or both)
- Rear-mounted IV pole and bracket save valuable floor space and allow for easier transport
- Egress assist wood arm caps
- Hinged push bar for maneuverability
- Four-wheel swivel with locking casters
- Choose from a variety of stains and fabrics
- CAL 133
- Foley Bag hooks on patient left, patient right or both sides.

Specifications

	Standard Width	Narrow Width
Part Number	3500-000-710	3500-000-705
Overall Width	33" (83.8 cm)	30" (76.2 cm)
Overall Height	47" (119.4 cm)	47" (119.4 cm)
Depth		
Overall	38" (96.5 cm)	38" (96.5 cm)
Seat	20.5" (52.1 cm)	20.5" (52.1 cm)
Recline / Leg Rest Up	74" (188 cm)	74" (188 cm)
Weight	165 lb. (74.8 kg)	170 lb. (77.1 kg)
Seat Width	26" (66 cm)	23" (58.4 cm)
Back Height From Seat	31" (78.7 cm)	31" (78.7 cm)
Seat Height From Floor	20.5" (52.1 cm)	20.5" (52.1 cm)
Arm Height From Floor	28" (71.1 cm)	28" (71.1 cm)

NOTE: BackSmart Trendelenburg Pedals add 2.5" to overall width of chair for clearance.

Warranty

Limited lifetime warranty
Warrantied 500 lb. (226 kg) weight capacity

*Stryker reserves the right to change specifications without notice.
Furniture is manufactured exclusively for Stryker Medical.*